



THE IMAGINARY HOUSE

The style woodwork by

MOISSONNIER



THROUGH THE BRANCHES, IT CAN BE SEEN. It seems to have been there forever and blends into the landscape. A majestic facade, animated by many openings, a stoop, a pediment... Push the door, and enter into Moissonnier universe, that of an imaginary house, which could become reality.

Art cabinetmaker since 1885, Moissonnier dresses interiors and shapes homes throughout the world by assisting individuals and professionals in architecture and decoration. As an extension of its original trade, Moissonnier also produces all types of style woodwork in France and abroad: woodwork walls, bookcases, fireplaces, dressing rooms, as well as kitchen and bathroom furniture...

Also, thanks to the great mastery of all the skills and the expertise of the "famous patina of time" of its craftsmen, Moissonnier style furniture has its own recognisable personality: a unique cachet of which only the house has the secret.

SUMMARY



BRINGING NATURE INSIDE
WINTER GARDEN p. 4

CREATING A WARM ATMOSPHERE
LIVING ROOM & FIREPLACE p. 5

THE HAPPINESS OF LARGE TABLES
DINING ROOM p. 7

WORK, READ, DREAM...
DESK & BOOKCASE p. 8

WELL-BEING AND SELF-CARE
BATHROOM p. 9

THE HEART OF THE HOUSE
KITCHEN p. 10

A SPACE OF YOUR OWN
BEDROOM & WARDROBE p. 12

A SET OF SKILLS AIMED AT EXCELLENCE
STYLE WOODWORK BY MOISSONNIER p. 14

WINTER GARDEN

BRINGING NATURE INSIDE. LIKE AN OPEN WINDOW, THE WINTER GARDEN INVITES NATURE INTO THE HOUSE...



BRIEFING Create a wall of style woodwork that seems to be an integral part of the house in a winter garden style.

FABRICATION This wall is made of traditional style woodwork, with mortise and tenon joints between the uprights and crosspieces. Made up of four arches, the upper part of the wall has library-type storage with shelves on wooden racks. The lower part includes a large bench completed on the right by doors.

CRAFT FOCUS

FINISHES

It is the work of a goldsmith to give the illusion of a piece of furniture that has survived the centuries and retained the marks of each generation. Scratches, wear and tear, worm holes, knocks, oxidation... alter the furniture to give it this incomparable patina, unique to Moissonnier. The gestures and recipes are the fruit of years of practice and remain the best kept secret of the factory. A patina absolutely unique and symbol of Moissonnier's know-how.

Project of Véronique Cotrel agency. Made by Moissonnier.

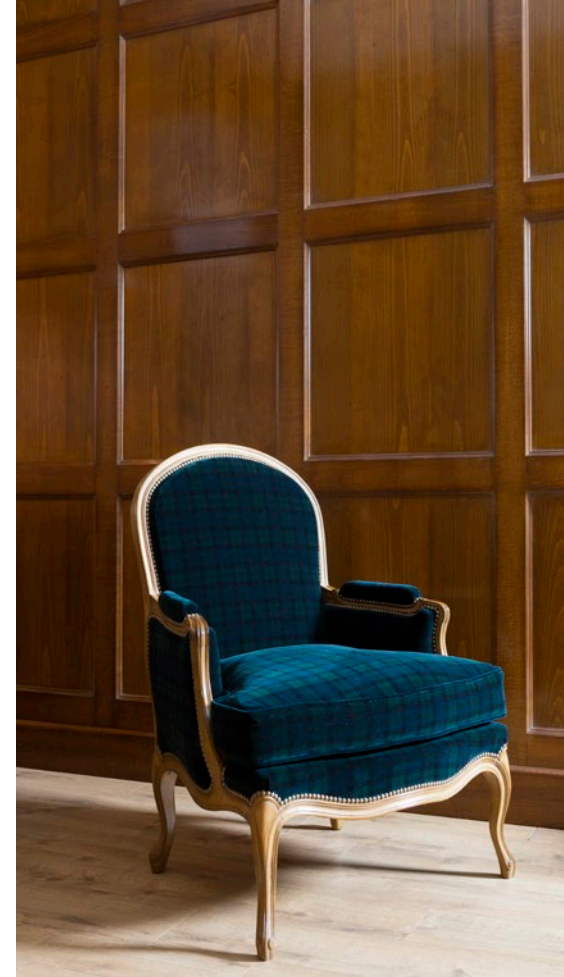
LIVING ROOM & FIREPLACE

CREATING A WARM ATMOSPHERE. THE LIVING ROOM HAS A VERY WARM ATMOSPHERE, ONE OF A FAMILY HOME WHERE EACH GENERATION LEAVES ITS MARK.



BRIEFING Create a Regency style wall of panelling incorporating a sideboard and moulded panels on either side.

FABRICATION The sideboard is made to measure according to a traditional frame construction: solid legs and doors with crossbars assembled by mortice and tenon joint. The crosspieces of the doors and woodwork are curved and moulded. To reinforce the antique look, the choice was made for vertical Regency-style lock escutcheons in patinated iron. Inside, a system of shelves on wooden racks was used to vary the height of the storage units.



BRIEFING Create a wall of wood panelling in the checkered boxes type.

FABRICATION The wall is built using the "profile and counter-profile" technique, which gives the illusion of a mortise and tenon assembly. Made of stained beech, the woodwork has a rather light tone, which is enlivened by shading and lightening. The objective: to give relief and create contrasts of material.

LIVING ROOM & FIREPLACE CREATING A WARM ATMOSPHERE.



BRIEFING Create a Regency style mantel in two tones: gris couture and grège.

FABRICATION Finely carved decoration of a shell in the centre surrounded by foliage. The side panels are made of scrolls on the edge. The whole is topped by a large overmantel with mirror.

CRAFT FOCUS

CARVER - CABINETMAKER

Woodcarving is a special skill, which requires training and great mastery. At Moissonnier, this is the speciality of Thomas, a cabinetmaker who develops this expertise. Flat or half-round gouges, clasps, chisels, knives.... are his daily tools. Each one has its own use and is chosen on purpose to sublimate a shell, a garland or a wreath of flowers... Under his hands, the relief comes to life and plays with light and shadow..



DINING ROOM

HAPPINESS OF LARGE TABLES. AH! THE MEMORY OF ANIMATED CONVERSATIONS, SHARED MEALS, RECIPES EXCHANGED AROUND THESE LARGE TABLES...



A Cogemad Haute Couture Estates & Interiors Projects.

BRIEFING Creating custom-made furniture inspired by the catalogue, but available in XXL sizes for exceptional residences.

FABRICATION Deploy know-how and mobilise internal resources to manage exceptional projects!



DESK & BOOKCASE

WORK, READ, DREAM... BUILDING A SPECIFIC SPACE THAT FAVORS STUDY AND DAYDREAMS.



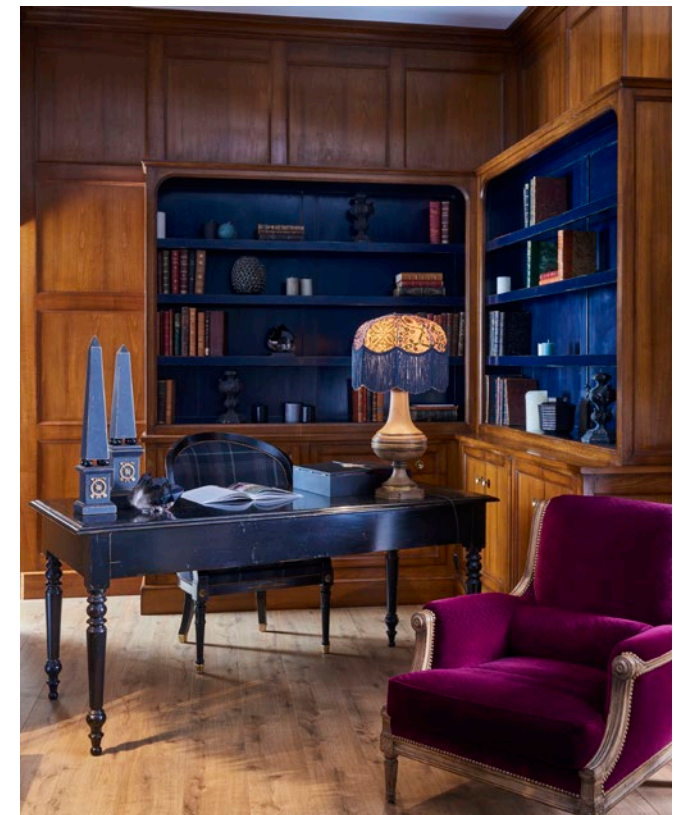
BRIEFING Create the illusion that the room pre-exists the renovation, by integrating bookcases, window openings and soffits.

FABRICATION Realisation of a recessed bookcase on three walls, as well as window embrasures for a total integration effect. The vertical lighting is positioned inside the front legs and is activated by remote switches. A black desk in 19th century style with a matt antique patina contrasts with the pickled oak bookcases..

Project of Véronique Cotrel Agency. Made by Moissonnier.

BRIEFING Create a corner bookcase in waxed wood, in the spirit of an English smoking room.

FABRICATION Corner bookcase made to measure in waxed wood. The lower part consists of doors and the upper part of open shelves with a beautiful navy blue patina.



BATHROOM

WELL-BEING AND SELF-CARE. WHEN THE BATHROOM REFLECTS THE SPIRIT OF THE HOUSE...

BRIEFING Create a bathroom with an eclectic spirit, mixing styles and eras, while remaining sober.

FABRICATION On either side of a central piece of furniture with a recess to accommodate the washbasin, there is storage space. The drawers on the sides are on metal tracks. At the top, mirrors with a triptych opening conceal storage units and glass shelves. The knobs and covers are nickel-plated to match the taps and wall lights. The washbasin, credenza and countertop in white Carrara marble blend in perfectly with the rest.



KITCHEN

THE HEART OF THE HOUSE. A KITCHEN THAT INVITES CONVIVIALITY AND SHARING.

EXPAND THE FIELDS OF POSSIBILITIES

With style woodwork, the kitchen is a new field of investigation for Moissonnier. And what possibilities! With its experience in the production and installation of woodwork, Moissonnier is able to design the kitchen of your dreams.....

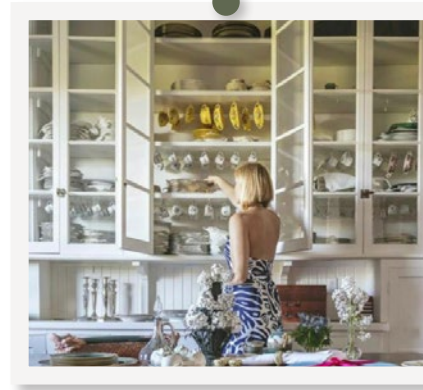


KITCHEN THE HEART OF THE HOUSE.

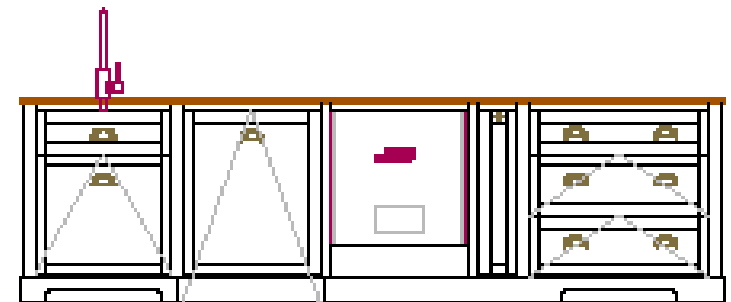
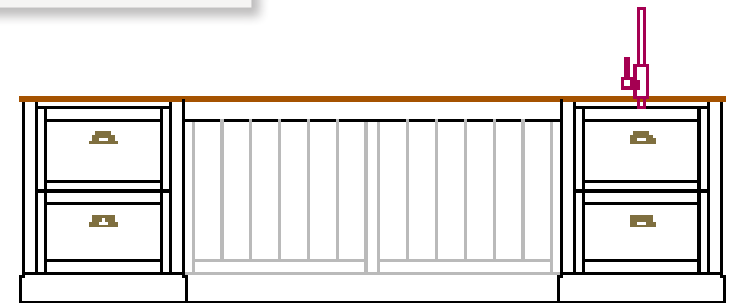


BRIEFING A 19th century inspired kitchen that combines wood and glass for a classic and refined style.

FABRICATION The whole kitchen plays with solid lacquered beech panels and more decorative glass panels. The structure with uprights and crosspieces takes up the visual codes of traditional manufacturing. The doors are assembled in counter-profile with replaqué beech panels. The historical references (leaf hinges or shell handles) do not prevent the integration of the latest "technologies" such as metal runners, LED lighting.....



Inspirational image from The Butler Pantry



BEDROOM & DRESSING

A SPACE OF YOUR OWN. THE IDEAL ROOM WITH AN ADJOINING DRESSING ROOM TO STORE YOUR WARDROBE.

BRIEFING Create a dressing room with a monogrammed pediment, in a couture style.

FABRICATION The dressing room is composed of a central recessed body and two slightly recessed bodies. The pediment with curved upper cornice is personalised with a medallion, with a hand-painted monogram. The five applied doors with larger plugs integrate mirrors for a practical and aesthetic aspect (enlargement of the space).



Project of Interior Home Design Agency. Made by Moissonnier.

BEDROOM & DRESSING A SPACE OF YOUR OWN.



BRIEFING Create a dressing room inspired by a chest-of-drawers from our collection (ref. 535).

FABRICATION Stile and rail structure with mortice and tenon joint and invisible hinges. The grooved panels have a band and a delicate embossing highlights the interior mouldings of the doors.



Villa Augustine Hôtel. Moissonnier Bed Head.

BRIEFING A head bed inspired by the Sévigné daybed (ref. 144) and made to measure. .

FABRICATION The dimensions had to be adapted to create the headboard inspired by a daybed model from the collection. Beautifully curved and moulded crosspieces, with gold embossing to give relief and preciousness.

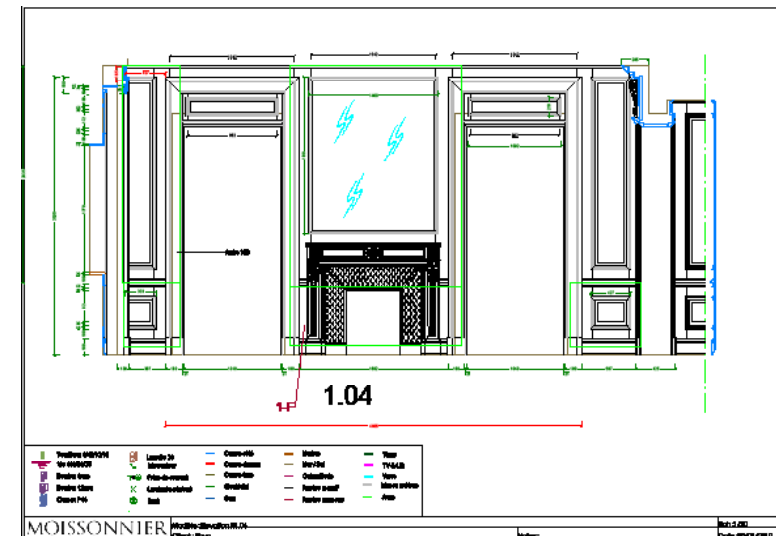
STYLE WOODWORK BY MOISSONNIER

A SET OF SKILLS AIMED AT EXCELLENCE

A PERSONALIZED SUPPORT

To support professionals, Moissonnier has an integrated design office whose objective is to offer architects and their teams personalised support for layout projects. Supported by the sales team, the design office oversees all stages of the project from the development of plans, through the creation, monitoring of manufacturing and installation: everything is managed internally.

Moissonnier knows how to combine its high quality know-how with modern functionality and comfort by integrating the latest technologies: integration of high fidelity audio-visual systems, LEDs with presence detectors, openings with invisible hinges, push to open system...





MAIN WOOD SPECIES USED BY MOISSONNIER

- Beech (in solid wood or panels) for all lacquered furniture.
- Oak, cherry and walnut for waxed furniture.

Ateliers

40, avenue Maginot
01000 Bourg-en-Bresse
Tél. +33 (0)4 74 23 15 31

Showroom

26, rue du Bac
75007 Paris
Tél. +33 (0)1 42 61 84 88

Bureaux

330, avenue San Severo
01000 Bourg-en-Bresse
Tél. +33 (0)4 74 23 15 31



Contacts

Yann Masson — Responsable Showroom
yann@moissonnier.com / +33 1 42 61 84 88
Lucien La — Responsable commercial export
lucien@moissonnier.com / +33 7 60 04 41 57



Entreprise
du Patrimoine
Vivant
L'excellence
des savoir-faire
français

moissonnier.com